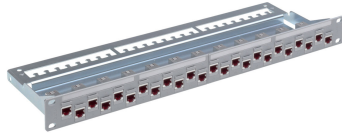


Product information

19" 1U ST Patch Panel 24xRJ45/s, Cat. 6A, gray, fully populated

R509882
1 Pcs.



- 19" 1U 24-port metal patch panel, empty, integrated cable tie shelf
- 24 Cat. 6A ISO connection modules, RJ45/s incl. EMC covers and dust covers
- 19" mounting kit
- 4 labeling strips
- Cable ties
- Installation instructions

090.5365

Technical Data

DESCRIPTION [UNIT]	VALUE/VALUE RANGE
Standard	IEC 60603-7-51: Electrical Characteristics of the Telecommunication Outlets ISO/IEC 11801 ed. 2.2: June 2011 EN 50173-1: May 2011
Protection class IP	IP 20
PoE	Yes
Shielding connector (A)	shielded
Connector type (A)	RJ45
Category connector (A)	Cat. 6 _A ISO
Number of connectors (A)	24
Holder for connector / module	Snap-in frame
Assembly	fully populated
Fastening	19 "
Rack mounting version	patch panel
Capacity (ports)	24
Amount of Height Units	1 U

Mechanical Data

DESCRIPTION [UNIT]	VALUE/VALUE RANGE
Width	482.6 mm
Height	43.2 mm
Depth	151.5 mm
Color	steel, blue, chromitized / front, gray (NCS 2502-B)

Patch panel with integrated cable tie shelf, optional direct grounding, 19" fastening kit, labeling field, accepting the snap-in type color coding clips in 8 colors.

Material: sub-rack made of sheet steel (DC01A) 1.5 mm, color blue chromated, screen made of plastic (ABS), halogen-free, color medium gray (NCS 2502-B).

RJ45 connection module of Cat. 6A ISO, for the setting up of transmission channels of Class EA with up to 4 plugged connections acc. to ISO/IEC 11801 ed. 2.2, June 2011, EN 50173-1 May 2011 (DIN EN 50173-1) and Class F on 2 pairs, complies with Cat. 6A requirements of the standards ISO/IEC 11801 ed. 2.2, June 2011, EN 50173-1 May 2011, as well the U.S. standard Cat. 6A according to TIA 568-C.2, re-embedded tested in acc. with IEC 60603-7-51 and 60512-27-100, interoperable and backwards compatible with Category 6 and Category 5e. Suitable for 10GBASE-T applications in acc. with IEEE 802.3™ Section Four up to 500 MHz and 100 m. Tested in line with R&M's manufacturing control, performing 100% inspection.

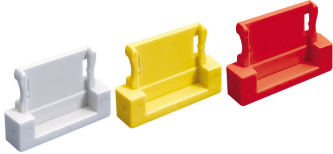
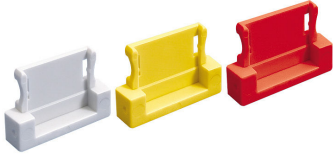
Compatible with RJ standard plugs (RJ11, RJ12, RJ45), connection with automatic wire cutting of installation cables AWG 26 - 22 (0.4 mm - 0.65 mm) and flexible cables AWG 26/7 - AWG 22/7 without special tools. X-Separator for individual pair shielding. Parallel pair termination without crossover in acc. with TIA 568-A/B, gold-plated bronze contacts for >1000 mating cycles, IDC contacts with >20 insertion cycles, contact resistance <5 mOhm, dielectric strength >1000 Veff. PoE and PoE+ compatible according to IEC 60512-99-001. 90° wire orientation without bending cable. With integral cable strain relief, including dust cover. Shield contacting by patented shield lance with integral cable strain relief, shield material tin-coated bronze, ground contacting through 1 contact finger for flat connectors 4.8 x 0.5 mm.

Material: halogen-free and heavy-metal free in acc. with EU directives RoHS 2.

Connection module Cat. 6A ISO, shielded, with EMC cover, dust cover, snap-in frame (gray), cable tie and installation instructions.

	Description	PU	Product No.
	Suitable for laser printers. Material: paper, white, perforated.	1 Pcs.	R305090
	Plastic plate with four mounted jumpering brackets. For a neat, horizontal routing of patch cords between patching fields. The reinforced plastic plate and snap-in jumpering brackets provide additional stability and quick mounting.	1 Pcs.	R306179
	Plastic plate with eight mounted jumpering brackets. For a neat, horizontal routing of patch cords between patching fields. The reinforced plastic plate and snap-in jumpering brackets provide additional stability and quick mounting.	1 Pcs.	R306180
	The radius guard guarantees compliance with admissible bending radius of copper and FO cables. The guard is mounted to the front of 19" racks. Color: medium gray (NCS 2503-B)	1 Pcs.	R306181
	For a simple and efficient ground connection. Accommodates one stranded cable of max. cross section of 6 mm². Suitable for 1U 24-port metal patch panel, 50xRJ45 voice panel and Global patch panel.	1 Pcs.	R302150

	Description	PU	Product No.
	For sheet metal cutouts of 15 x 19.5 mm in diameter and sheet thickness of 1.5 and 3 mm. Color: light gray (NCS 1005-R80B)	10 Pcs.	R308708
	Color coding clip for snap-in adapters.	10 Pcs.	R302151
	Color coding clip for snap-in adapters.	10 Pcs.	R302152
	Color coding clip for snap-in adapters.	10 Pcs.	R302153
	Color coding clip for snap-in adapters.	10 Pcs.	R302158
	Color coding clip for snap-in adapters.	10 Pcs.	R302154
	Color coding clip for snap-in adapters.	10 Pcs.	R302155

	Description	PU	Product No.
	Color coding clip for snap-in adapters.	10 Pcs.	R302156
	Color coding clip for snap-in adapters.	10 Pcs.	R302157